

# Flexible Current Probe Simple Logger®



## Models AL24-2500, AL36-2500, AL24-5000 & AL36-5000

### Specifications

#### ELECTRICAL

**Number of Channels:** One

**Measurement Range:**

0 to 250Arms; 0 to 2500Arms  
0 to 500Arms; 0 to 5000Arms

**Input:**

5 to 250 or 5 to 2500Arms or  
5 to 500, 5 to 5000Arms  
Internally Switch Selectable

**Input Sensor:**

AmpFlex™ 24" or 36"  
Flexible Current Sensor

**Resolution:**

250A range: 125mA max  
500A range: 250mA max  
2500A range: 1.25A max  
5000A range: 2.5A max

**Accuracy\*:** 1% of Reading + Resolution  
(see inside back cover for details)

**Sample Rate:** 4096/hr maximum

**Storage Technique:**

Time Extension Recording™ (TXR™)

**Data Storage:** 8192 readings

**Power:** 9V Alkaline battery

**Battery Life:**

Up to six months of recording @ 25°C

**Output:** RS-232 via DB-9 connector

**Indicators:** Red LED light flashes once every two seconds in LOGGING mode, and is off in OFF mode. LED is on continuously in overload condition

**Controls:** One button used to start and stop recording sessions and to turn the data logger on and off

**Working Voltage:** 600VAc maximum

#### MECHANICAL

**Size:**

Sensor: Diameter 0.5" (12.5mm)

Logging Module:

1 9/16 x 2 1/2 x 4 1/2"

(40.64 x 63.5 x 114.3mm)



**Weight:** (with battery) 15.5 oz (439g)

**Mounting:** Velcro® pads supplied loose

**Maximum Conductor Size:**

24" length: 8" diameter conductor  
36" length: 12" diameter conductor

#### ENVIRONMENTAL

**Operating Temperature:**

-4° to +158°F (-20 to +70°C)

**Storage Temperature:**

-4° to +174°F (-20 to +80°C)

**Relative Humidity:**

5 to 95% non-condensing



### Features

- Four models to choose from
- True RMS recording (250 & 2500Arms) (500 & 5000Arms)
- Self contained — no exposed connections
- Weatherproof NEMA 4X, IP65 rated
- Flexible sensor — fits anywhere
- Records for up to 6 months
- Scale automatically selected in software
- RS-232 output

### Applications

- Load profiling
- Machine load monitoring
- Substation monitoring

### ORDERING INFORMATION

### CATALOG NO.

Simple Logger® Model AL24-2500, RMS Current (250/2500A), 24" AmpFlex™ ..... Cat. #2113.72

Simple Logger® Model AL36-2500, RMS Current (250/2500A), 36" AmpFlex™ ..... Cat. #2113.73

Simple Logger® Model AL24-5000, RMS Current (500/5000A), 24" AmpFlex™ ..... Cat. #2113.74

Simple Logger® Model AL36-5000, RMS Current (500/5000A), 36" AmpFlex™ ..... Cat. #2113.75

All Flexible Current Probe Loggers are supplied with software (CD-ROM), 6 ft DB-9 RS-232 serial cable, 9V Alkaline battery and user manual



# Simple Logger® Software

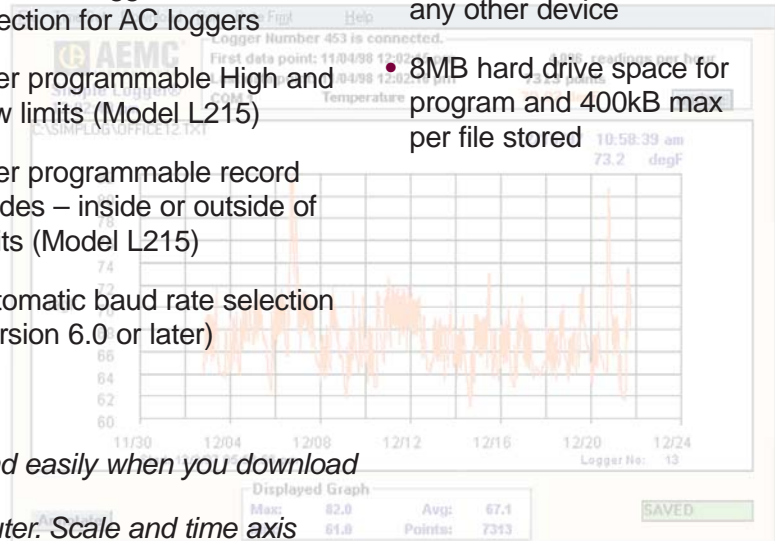
## Features

- Very easy to setup and use — no programming required
- Statistics appear on screen: Max, Min, Avg, Date and Time
- On-Line display of data logger values
- Zoom capability with automatic statistics update
- User keyed text annotations
- Automatically displays values at the cursor position
- Export data to spreadsheet and database software

- Print both graphs and tabular listings
- Paste graphs into other applications
- Programmable scale and units for all DC loggers. Automatic selection for AC loggers
- User programmable High and Low limits (Model L215)
- User programmable record modes – inside or outside of limits (Model L215)
- Automatic baud rate selection (version 6.0 or later)

## Computer Requirements

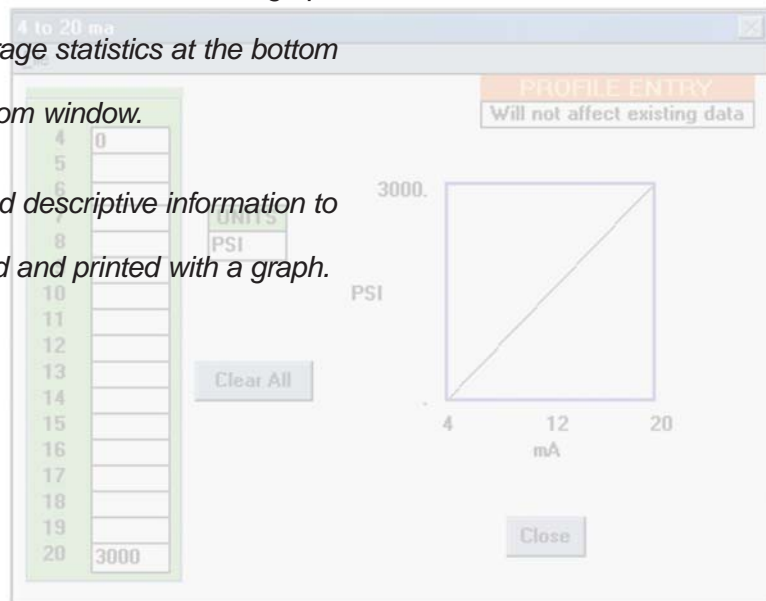
- 486 or higher
- 8MB of RAM
- Windows®95/98/2000/ME/XP or Windows®NT
- One serial port not in use by any other device
- 8MB hard drive space for program and 400kB max per file stored



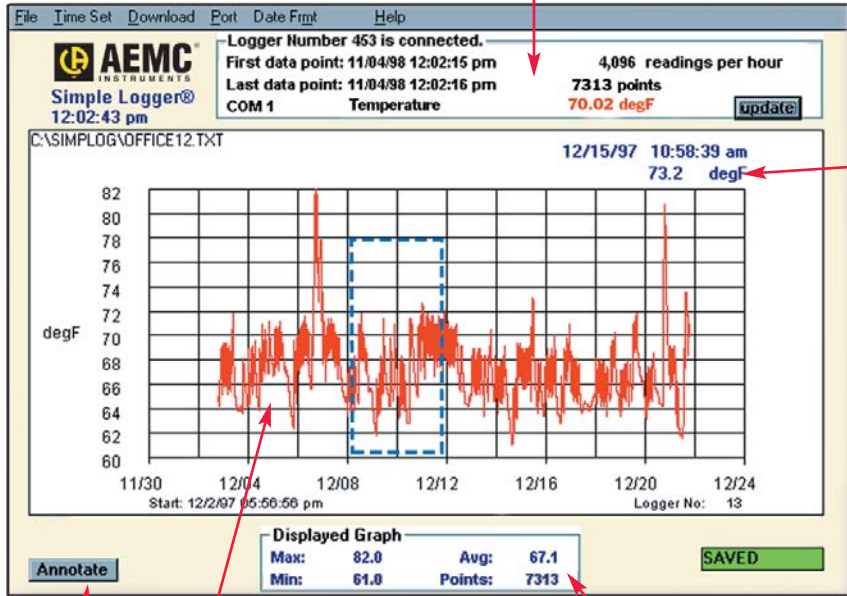
Plot graphs and view statistics quickly and easily when you download data from Simple Logger® to your computer. Scale and time axis update automatically.

Click and drag your mouse to zoom up the desired area of the graph for better viewing. The Min, Max and Average statistics at the bottom of the graph update automatically with zoom window.

Click the Annotate button to add a title and descriptive information to your graph. This information can be stored and printed with a graph.



On-line display of data

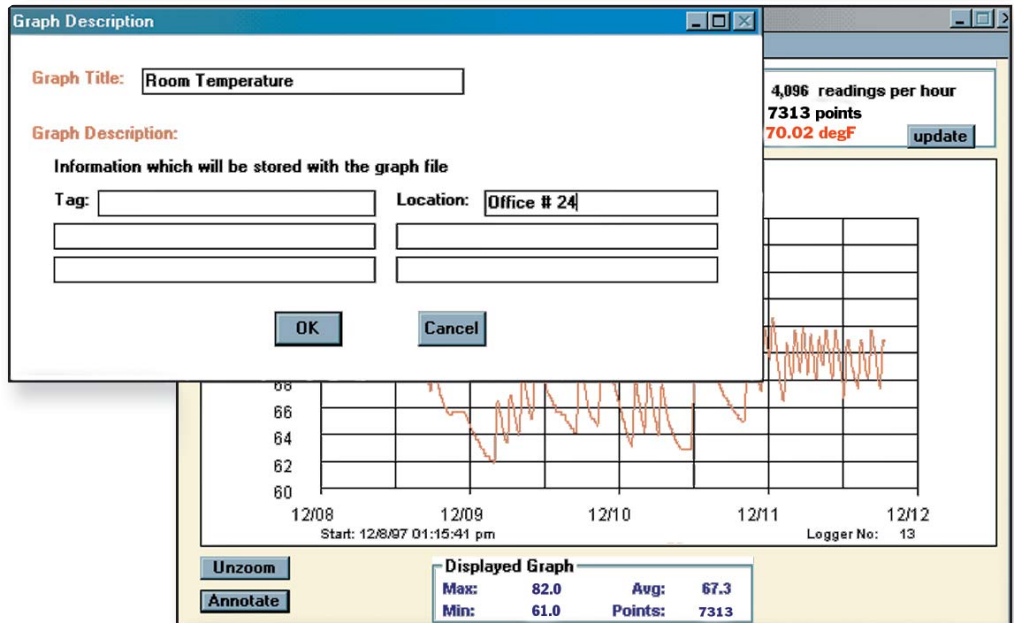


Automatic update of Y data at cursor position

Annotate button

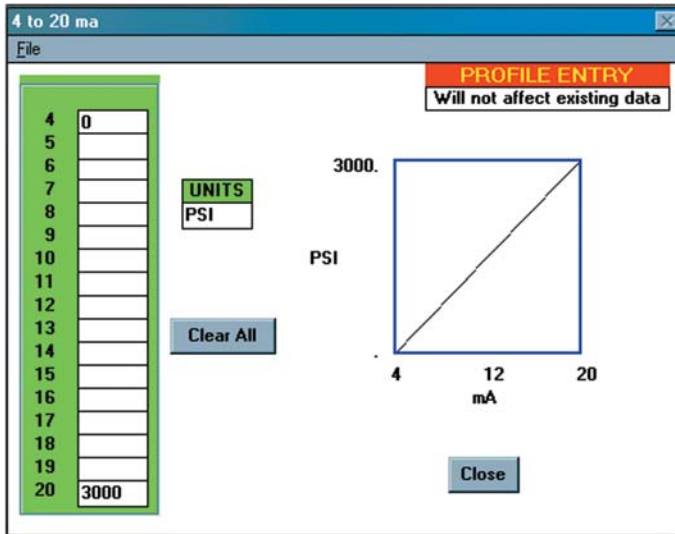
Plot area with value and time data shown on the X and Y axis

Graph Statistics

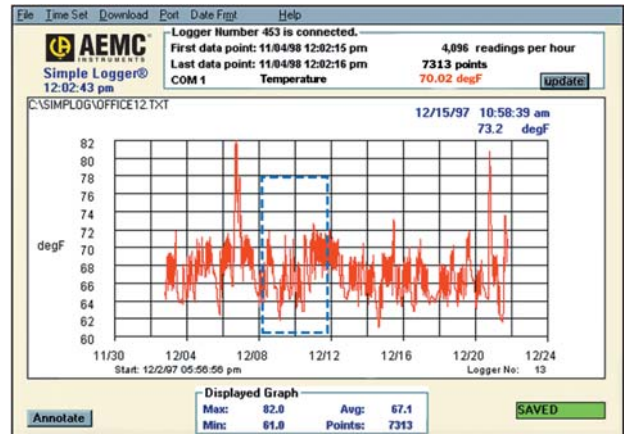


Click the Annotate button to add a title and descriptive information to your graph. This information can be stored and printed with a graph.

# Simple Logger® Software



Click the scale button in the file menu to create custom scales and engineering units for DC voltage (Models L410 & L430) and DC current loggers (Model L320).



Click and drag your mouse to zoom up the desired area of the graph for better viewing. The Min, Max and Average statistics at the bottom of the graph update automatically when the graph is zoomed.

## Contact Us

### United States & Canada:

Chauvin Arnoux<sup>®</sup>, Inc.  
d.b.a. AEMC<sup>®</sup> Instruments  
200 Foxborough Blvd.  
Foxborough, MA 02035 USA  
(508) 698-2115 • Fax (508) 698-2118  
[www.aemc.com](http://www.aemc.com)

**Customer Support – for placing an order, obtaining price & delivery:**  
[customerservice@aemc.com](mailto:customerservice@aemc.com)

**Sales Department – for general sales information:**  
[sales@aemc.com](mailto:sales@aemc.com)

**Repair and Calibration Service – for information on repair & calibration, obtaining a user manual:**  
[repair@aemc.com](mailto:repair@aemc.com)

**Technical and Product Application Support – for technical and application support:**  
[techinfo@aemc.com](mailto:techinfo@aemc.com)

**Webmaster – for information regarding [www.aemc.com](http://www.aemc.com):**  
[webmaster@aemc.com](mailto:webmaster@aemc.com)

### South America, Central America, Mexico, Caribbean, Australia & New Zealand:

Chauvin Arnoux<sup>®</sup>, Inc.  
d.b.a. AEMC<sup>®</sup> Instruments  
15 Faraday Drive  
Dover, NH 03820 USA  
(978) 526-7667 • Fax (978) 526-7605  
[export@aemc.com](mailto:export@aemc.com)  
[www.aemc.com](http://www.aemc.com)

### All other countries:

Chauvin Arnoux SCA  
190, rue Championnet  
75876 Paris Cedex 18, France  
33 1 44 85 45 28 • Fax 33 1 46 27 73 89  
[info@chauvin-arnoux.com](mailto:info@chauvin-arnoux.com)  
[www.chauvin-arnoux.com](http://www.chauvin-arnoux.com)